



9 Hampshire St., Mansfield, MA 02048
www.kinteraequipment.com

Project:	
Model #:	
Item #:	
Available W/H:	Qty:
Approval:	
AIA #:	SIS #:
CSI Section 11400	

Solid Door Refrigerator

Reach-In Bottom Mount
KINTERA

FEATURES & BENEFITS

Model : KBM1RZ

■ Digital temperature control & monitor system

- Keeps food products safe by maintaining constant temperatures
- Alarms that sound when doors are not sealed shut; protect against food spoilage that originates from cold air leaks
- Early warning alarm program detects issues before malfunction occurs
- Digital display allows for easy monitoring
- Programs interpret the condition of refrigeration systems by self-diagnosis
- Rapid cool-down function (Turbo Cooling)
- Automatic evaporator fan motor delays

■ Hydrocarbon refrigerants (R-600a)

With innovative and eco-friendly technology, KINTERA brings you hydrocarbon refrigerators designed to meet DOE's Energy Conservation Standards in 2017 and to use EPA's SNAP Program approved HC refrigerants. Hydrocarbon refrigerants do not deplete the ozone layer and have very low contribution to global warming (ODP-0, GWP-3).

■ Hot gas condensate system

Through KINTERA's creative innovation, the condensate system surfaces have been specially treated to resist corrosion. This not only increases efficiency without the risk of refrigerant leakage from corrosion, but also prevents the overflow of condensate water.

■ Cabinet construction

KINTERA model boasts a stainless steel exterior (door) with AL exterior sides (galvanized steel top, bottom, and back). Interior has a stainless steel bottom with AL interior (walls, door liners, and top duct).

■ High-density polyurethane insulation

The entire cabinet structure and solid doors are foamed-in-place using high density, CFC free polyurethane insulation.

■ LED interior lighting

■ Adjustable, heavy duty, PE (polyethylene) coated wire shelves

■ Self-contained system

■ 4" dia. swivel casters with locks on the front set

■ Door locks

■ Solid and sturdy grille design

■ Bottom mount compressor

■ Anti-corrosion coated evaporator standard feature

■ Field reversible door hinge

■ Refrigerator holds 33°F ~ 38°F for the best in food preservation



NATURAL
Refrigerant




Model	Swing Door	CU./FT.	#of Shelves	HP	AMPS	Crated Weight (lbs.)	L x D x H [†] (inches)
KBM1RZ	1	21.94	3	1/8	1.5	278	28³/₄ x 30³/₄ x 78

Solid Door Refrigerator

Reach-In Bottom Mount
KINTERA

Model : KBM1RZ

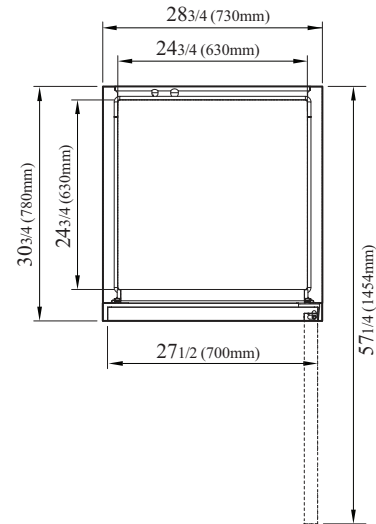
ELECTRICAL DATA	
Voltage	115/60/1
Plug Type	 NEMA 5-15P
Full Load Amperes	1.5
Compressor HP	1/8
Cord Length (ft.)	9
Refrigerant	R-600a
DIMENSIONAL DATA	
# of Doors	1
Net Capacity (cu. ft.)	21.94
Ext. Length Overall (in.)	28 3/4 (730mm)
Ext. Depth Overall (in.)	30 3/4 (780mm)
Ext. Height Overall (in.) [†]	78 (1982mm)
Int. Length Overall (in.)	24 3/4 (630mm)
Int. Depth Overall (in.)	24 3/4 (630mm)
Int. Height Overall (in.)	53 7/8 (1368mm)
# of Shelves	3
Shelf Size (L x D) (in.)	23 7/8 x 23 1/8
Net Weight (lbs.)	260
Gross Weight (lbs.)	278

Design and specifications subject to change without notice.
Actual shipping weight may differ due to extra packing materials for product protection.
† Height does not include 4-3/4" for caster height.

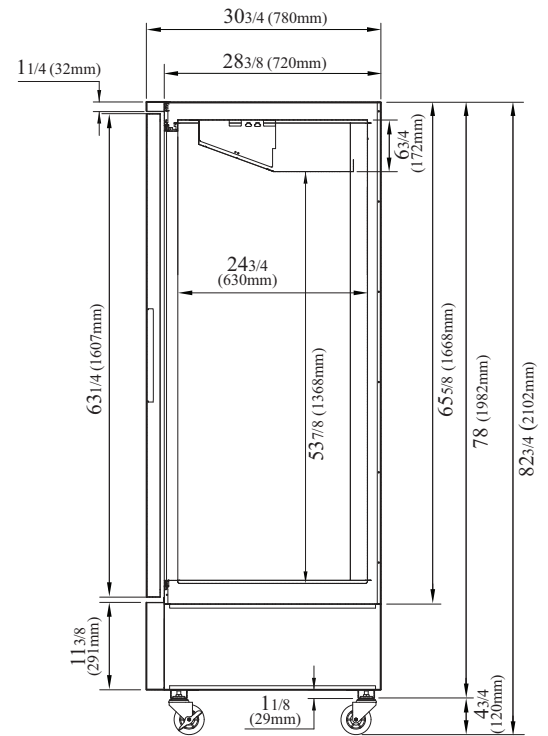
- **WARRANTY : 2 Year Parts and Labor Warranty**
Additional 3 Year Warranty on Compressor

PLAN VIEW

(unit : inch)



TOP VIEW



SIDE VIEW

Ver.20250120



Warranty : 800-381-7770
info@kinteraequipment.com