

## REFRIGERATOR MERCHANDISERS

Model	Product ID	Size
<b>KGD23R</b>	919609	(1) Door, 23 cu ft

### STANDARD FEATURES

- Triple pane locking glass doors w/ heat reflecting film
- Very bright LED lighting
- (4) Epoxy coated shelves per section
- Adjustable heavy duty coated shelves
- High density insulation
- Solid state temperature control w/ digital display
- Removable door gaskets
- Whisper quiet, high efficient compressor
- Visually appealing to compliment products stored
- Economically designed door handle
- Bottom mount, slide out condenser


**KGD23R**

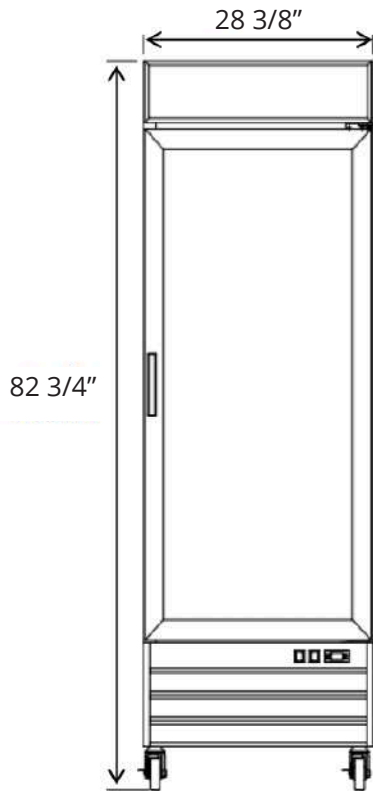
### WARRANTY

Kintera Refrigeration equipment is warranted to be free from defects in material and workmanship under normal use and service for a period of 2 years for parts and labor. The compressor carries an additional 3 year warranty for the part only.

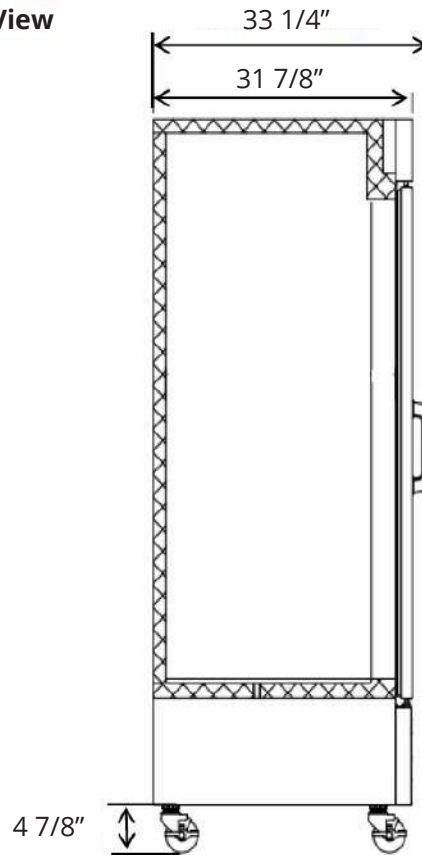
Items	Description	Items	Description
<b>External top &amp; side</b>	Enamel coated steel	<b>Temperature control</b>	Solid state thermostat w/ digital display
<b>Door</b>	Glass - triple pane, tempered	<b>Comply to standard</b>	ETL
<b>External back</b>	Aluminum	<b>Refrigerating system</b>	Capillary tube
<b>Cabinet internal</b>	White aluminum	<b>Refrigerant</b>	R290
<b>Internal floor</b>	300 Series stainless steel	<b>Temp. range in box</b>	33°F to 41°F
<b>Insulation</b>	Polyurethane (CFC free)	<b>Evaporator/condenser</b>	Aluminum + copper
<b>Shelves</b>	Heavy duty, Epoxy coating	<b>Condensing unit</b>	Bottom
<b>Lighting</b>	LED	<b>Door lock</b>	Standard



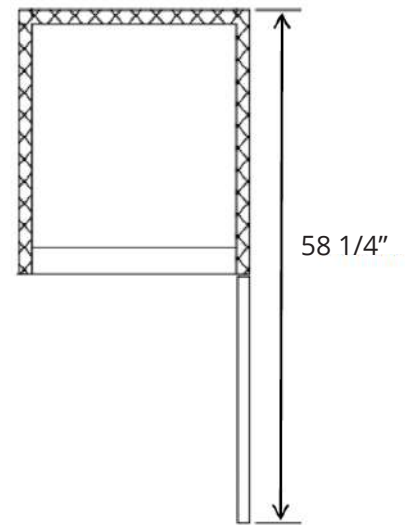
Font View




Side View



Top View



Model	Product ID	# of Doors	Storage CAP (cu ft)	Shelves	Shelves Sizes (in)	Cabinet Dimensions			HP	Voltage /Hz /ph	Amp	NEMA Plug	Cord Length (ft)	Crated Weight (lbs)
						W	D	H						
KGD23R	919609	1	23	4	19 x 20	28 3/8"	33 7/8"	82 3/4"	1/5	115/60/1	3	 5-15P	10	344

\* Plug Type Varies by Country.