



Project _____

Item # _____

Quantity _____

Toast-Qwik® Electric Conveyor Toaster

Model: TQ3-10

Hatco's next generation of Toast-Qwik® Conveyor Toasters have been designed to provide a great look, and increased production capabilities. They continue to provide the best reliability, flexibility and value of any conveyor toaster available!


Standard features


- Patented ColorGuard sensing system which continually monitors chamber temperature and adjusts the chamber to ensure consistent toast results - even in your busiest periods
- Power Save mode activates manually by pressing the Power Save Button above the leaf symbol which reduces power 50%
- Features an Air Intake Filter Screen which is removable for easy cleaning
- Crumb tray is removable
- 2" (51 mm) high opening
- DC stepper motor provides wide range of linear and precise speed control
- Available in *Designer* Black finish to blend with any decor
- Provides approximately 250 slices per hour
- Double-sided or single-sided toasting at the touch of a button



Air Intake Filter Screen

Power Save mode button above leaf symbol

 IFS anti-microbial coatings use naturally-occurring, environmentally sustainable, silver ions to help inhibit the growth of microbes on the powder coated surface. See www.hatcocorp.com/antimicrobial-paint for more information.

 For operation, location and safety information, please refer to the Installation and Operating Manual.



HATCO CORPORATION | P.O. Box 340500 Milwaukee, WI 53234-0500 U.S.A. | (414) 671-6350

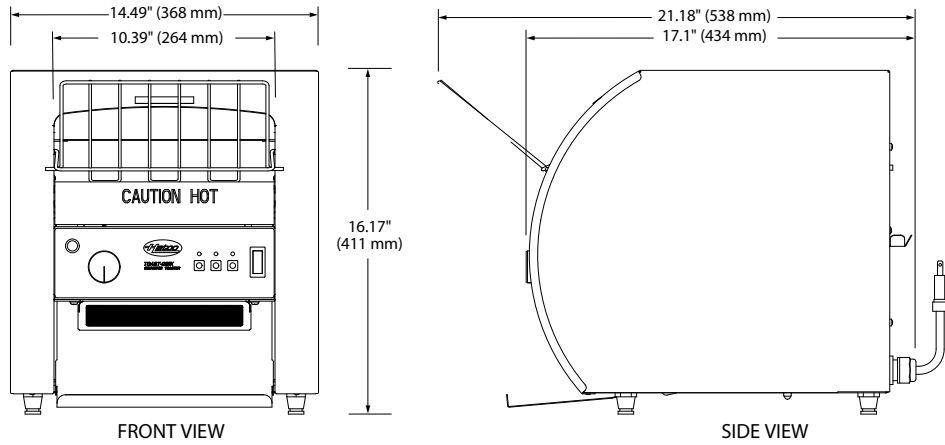
 www.hatcocorp.com | support@hatcocorp.com | [Find a Hatco Rep](#) | [Image Library](#) | [Document Library](#) | [Patents](#) | [Chat](#)



Toast-Qwik® Electric Conveyor Toaster

Model: TQ3-10

TQ3-10



SPECIFICATIONS Toast-Qwik® Conveyor Toaster

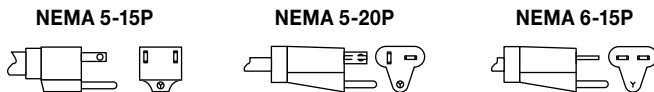
Model	Opening Dimensions (W x H)	Dimensions (W x D x H)	Volts Single Phase	Hertz	Watts	Amps	Plug	Approx. Ship Weight
TQ3-10	10.39" x 2" (264 x 51 mm)	14.49" x 21.18" x 16.17" (368 x 538 x 411 mm)	120	50/60	1780	14.8	NEMA 5-15P*	54 lbs. (25 kg)
			208	50/60	1780	8.6	NEMA 6-15P	
			240	50/60	1780	7.4	NEMA 6-15P	

* Canadian models use NEMA 5-20P.

CORD LOCATION

Lower right corner on back of unit.

PLUG CONFIGURATIONS



PRODUCT SPECS Conveyor Toaster

The electric Toast-Qwik® Conveyor Toaster with ColorGuard sensing system shall be a Hatco model ... as manufactured by the Hatco Corporation, Milwaukee, WI 53234 U.S.A.

The Toaster shall have the capacity to toast up to ... pieces per hour and it shall be rated at ... kW, ... volts, single phase. The toaster shall be of Powdercoated steel

design and shall include double or single sided toasting capabilities, manual power save mode, a removable/cleanable air intake filter screen, variable speed control and power save mode. The toaster will have metal sheathed heating elements and factory attached UL listed cord and plug.

Warranty consists of 24/7 parts and service assistance (US and Canada only).

HATCO CORPORATION | P.O. Box 340500 Milwaukee, WI 53234-0500 U.S.A. | (414) 671-6350



www.hatcocorp.com | support@hatcocorp.com | [Find a Hatco Rep](#) | [Image Library](#) | [Document Library](#) | [Patents](#) | [Chat](#)